

# Salix Gripple TL-P4H

The TL-P4 holds all types of erosion control and soil stabilisation blanket matting securely in place

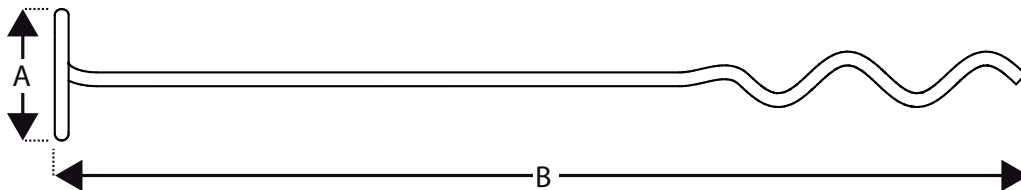
## FEATURES / BENEFITS

- Quick and easy to install with a standard electric drill
- Superior performance when compared to traditional straight pins
- Eliminates time & labour associated with replacing or reworking pins that have become loose or pulled out altogether
- The patent pending innovative design of the installation chuck allows the TL-P4 to be installed to full depth without damaging the mat
- Integrated top coil form eliminates the need for a washer, spreads the load and helps secure the matting in place
- Extended tip allows faster placement and enhanced interaction with matting on install
- Specifically designed for use in tougher soils



## SPECIFICATION

Dimension	Length (mm)
A	35
B	300



## INSTALLATION TOOLS

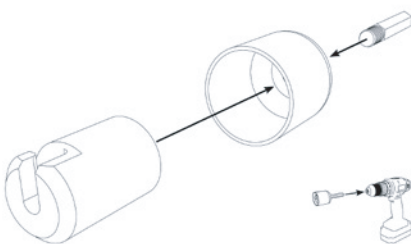


Chuck  
(90 mm)



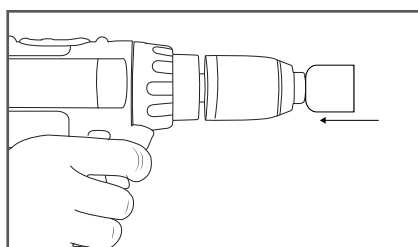
Extended Chuck  
(490 mm)

## CHUCK ASSEMBLY

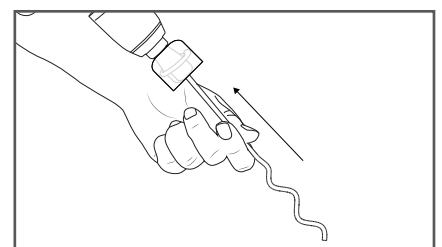


## INSTALLATION

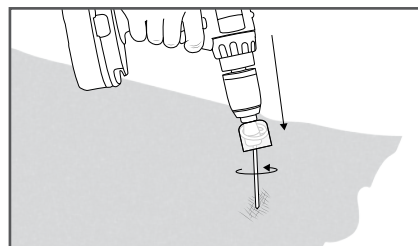
1.



2.



3.



4.



Proper considerations should be given to underground services before installing.